



# KINGS WESTON ESTATE

WITH

AVONMOUTH AS A

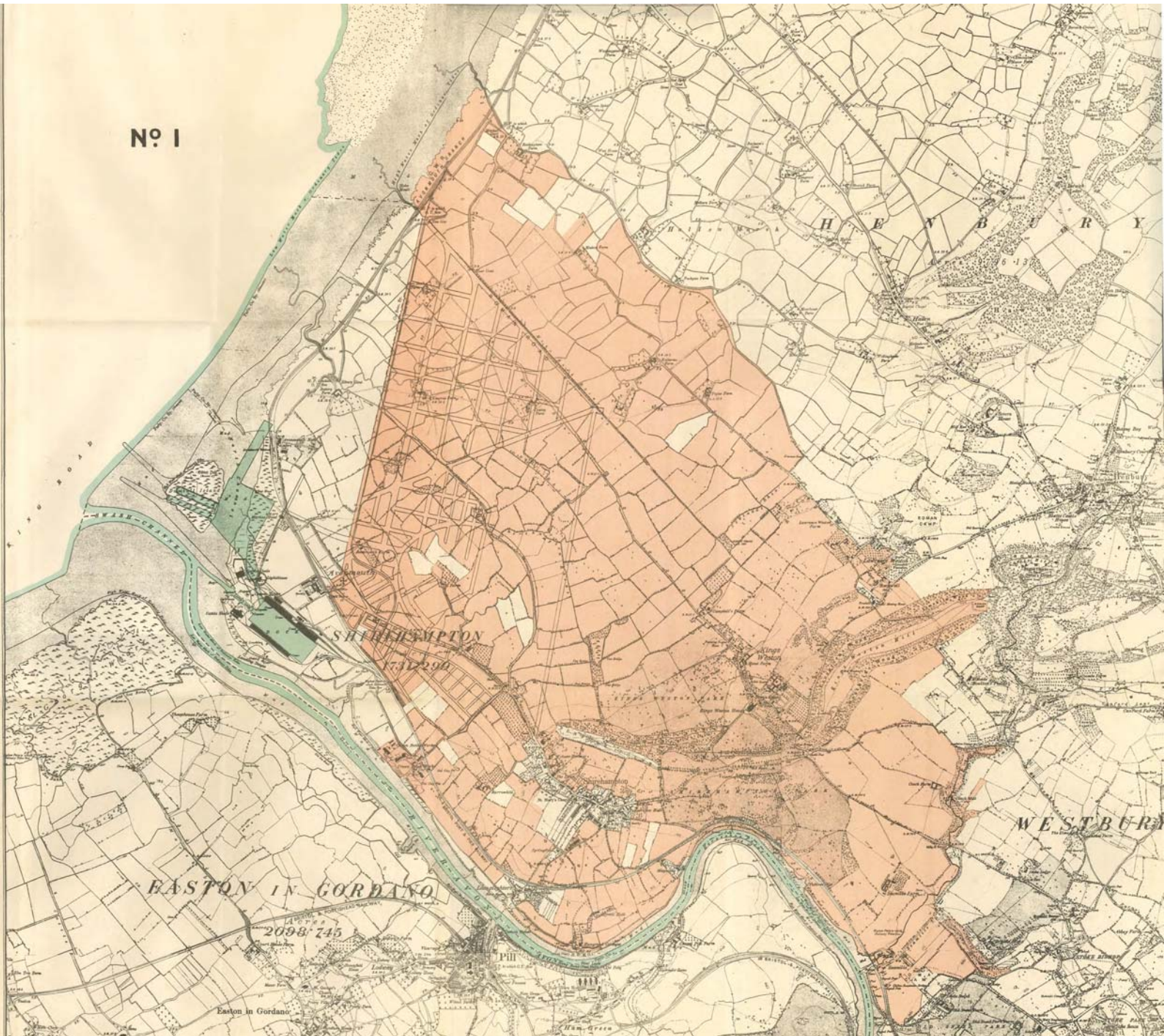
SEAPORT &

COMMERCIAL CENTRE

**Kings Weston Estate with Avonmouth  
as a Seaport & Commercial Centre.**



Nº 1



Kings Weston Estate with

AVONMOUTH . . .

as a

SEAPORT and

Commercial CENTRE

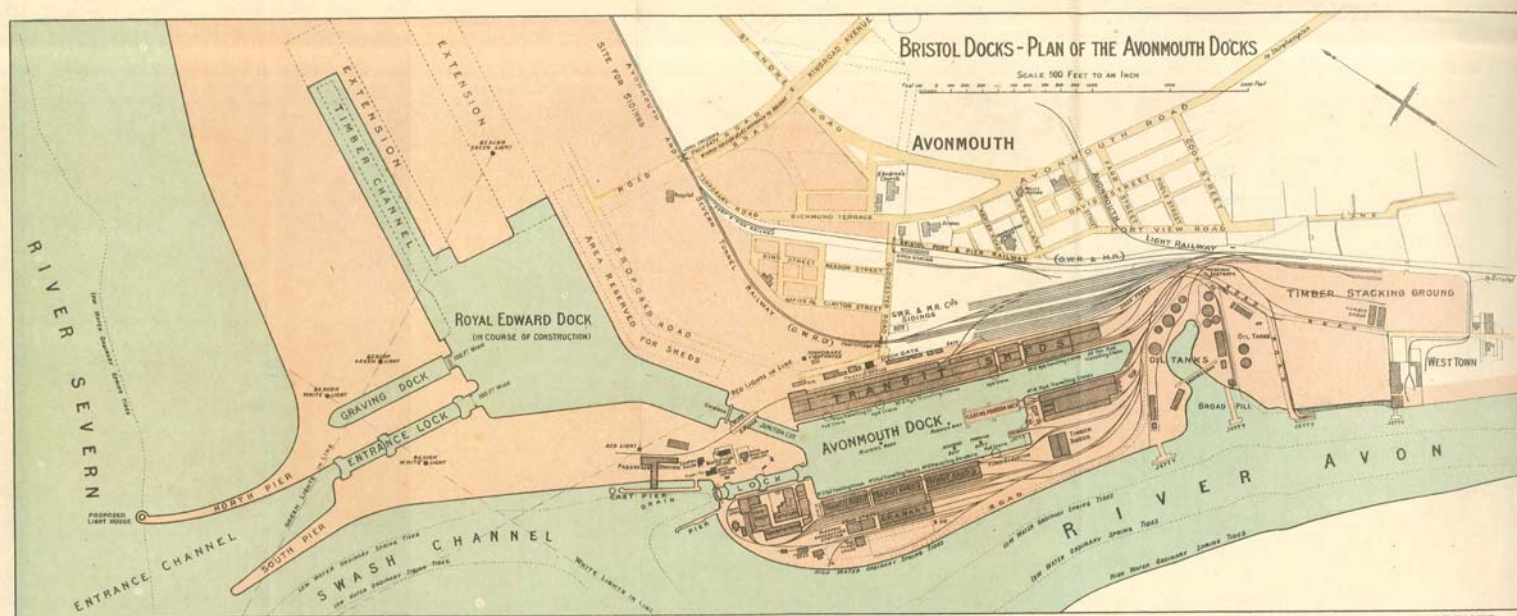


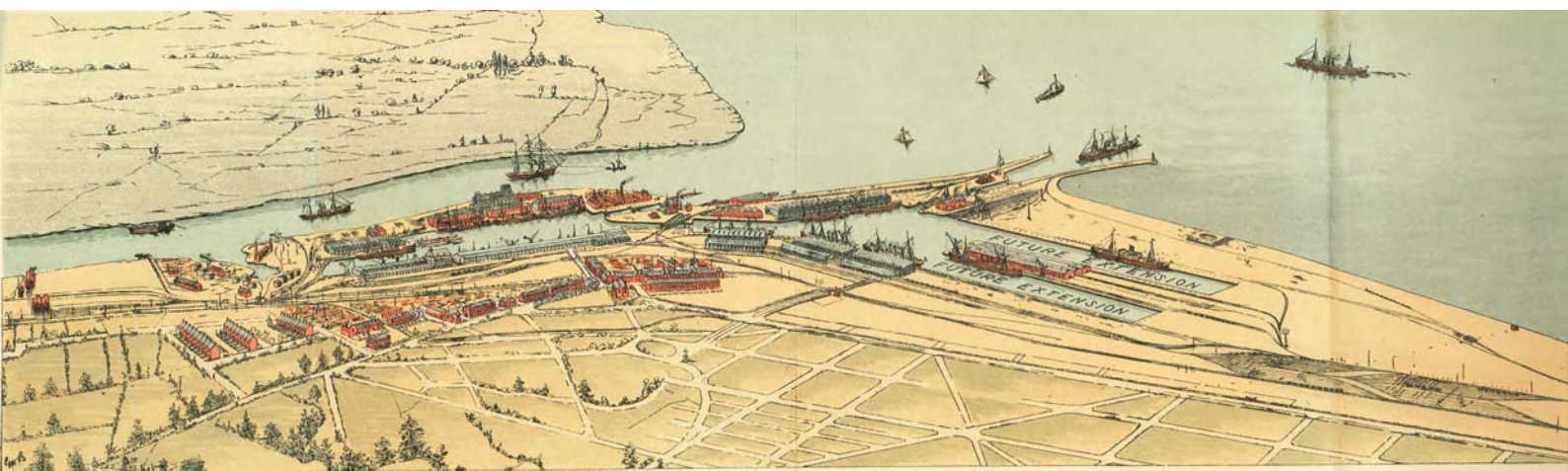
Bristol :

LAVARS & Co., PRINTERS, 51, BROAD STREET

1905







AVONMOUTH DOCKS · BRISTOL

## CONTENTS.

---

	PAGE.
PROPRIETOR AND LIST OF OFFICIALS of the Kings Weston	
Estate .. .. .	9
THE KINGS WESTON ESTATE .. .. .	11
AVONMOUTH DOCK .. .. .	25
OCEAN TRADE .. .. .	27
NEW DOCK .. .. .	31
RAILWAY CONNECTIONS .. .. .	31
WATER TRANSPORT .. .. .	33
LAND FOR NEW WORKS .. .. .	35
FOREIGN PORTS to which Steamers sail regularly from	
the Port of Bristol .. .. .	41



## PLANS.

---

- MAP No. 1—Estate with Key as to position in West of  
England
- „ No. 2—Development
- „ No. 3—Perspective View of Avonmouth and Docks
- „ No. 4—Docks Estate—Bristol, Avonmouth and  
Portishead



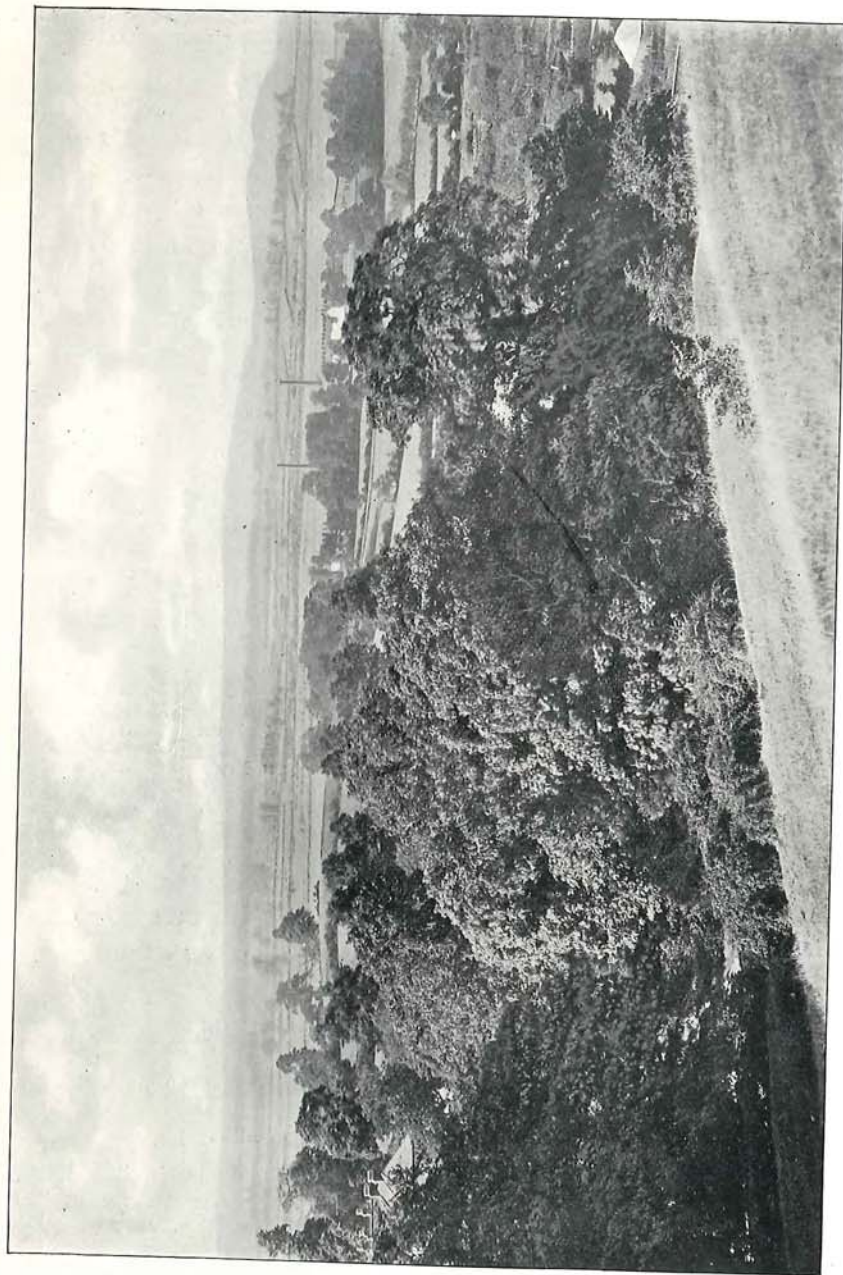


ECHO WALK, KINGS WESTON.



## LIST OF ILLUSTRATIONS.

	<i>Page</i>
ECHO WALK, KINGS WESTON ... ..	6
VIEW FROM PEN POLE POINT—looking South into Somersetshire	8
AVON GORGE FROM TERRACE, KINGS WESTON—looking South-East	12
AVONMOUTH FROM PEN POLE POINT ... ..	14
HORSESHOE BEND (looking South-East) FROM SHIREHAMPTON PARK	15
AVON RIVER AT HUNGROAD ... ..	16
RICHMOND BUILDINGS, AVONMOUTH ... ..	18
WORKMEN'S DWELLINGS, DAVIS STREET, AVONMOUTH	19
WORKMEN'S DWELLINGS, FARR STREET, AVONMOUTH	20
ST. ANDREW'S CHURCH, AVONMOUTH ... ..	21
THE MILES' ARMS, AVONMOUTH ... ..	22
KINGS WESTON ESTATE OFFICE, SHIREHAMPTON	23
CLIFTON SUSPENSION BRIDGE AND RIVER AVON—from the Somersetshire side ... ..	26
ENTRANCE LOCK AT AVONMOUTH DOCK ... ..	28
ENTRANCE LOCK AT AVONMOUTH DOCK—showing Caisson	29
S.S. "MONTEAGLE" ABOUT TO ENTER AVONMOUTH DOCK	30
S.S. "MONTCALM" IN AVONMOUTH DOCK...	32
S.S. "CITY OF VIENNA" IN AVONMOUTH DOCK ..	34
CATTLE UNLOADING AT AVONMOUTH DOCK ... ..	36
ARMSTRONG'S HYDRAULIC COALING CRANE, AVONMOUTH DOCK ...	37
ARMSTRONG'S HYDRAULIC COALING CRANE (at work) AVONMOUTH DOCK ... ..	38
PONTOON DOCK, AVONMOUTH—Bristol Dredger Repairing	39
GRANARY, AVONMOUTH DOCK ... ..	40
OIL TANKS, AVONMOUTH DOCK ... ..	42
SIDINGS AND CONNECTIONS (Midland and G.W. Railways) AVONMOUTH DOCK ... ..	44
BRISTOL—CUMBERLAND BASIN ENTRANCE—from Somersetshire side	45



VIEW FROM PEN POLE POINT LOOKING SOUTH INTO SOMERSETSHIRE.



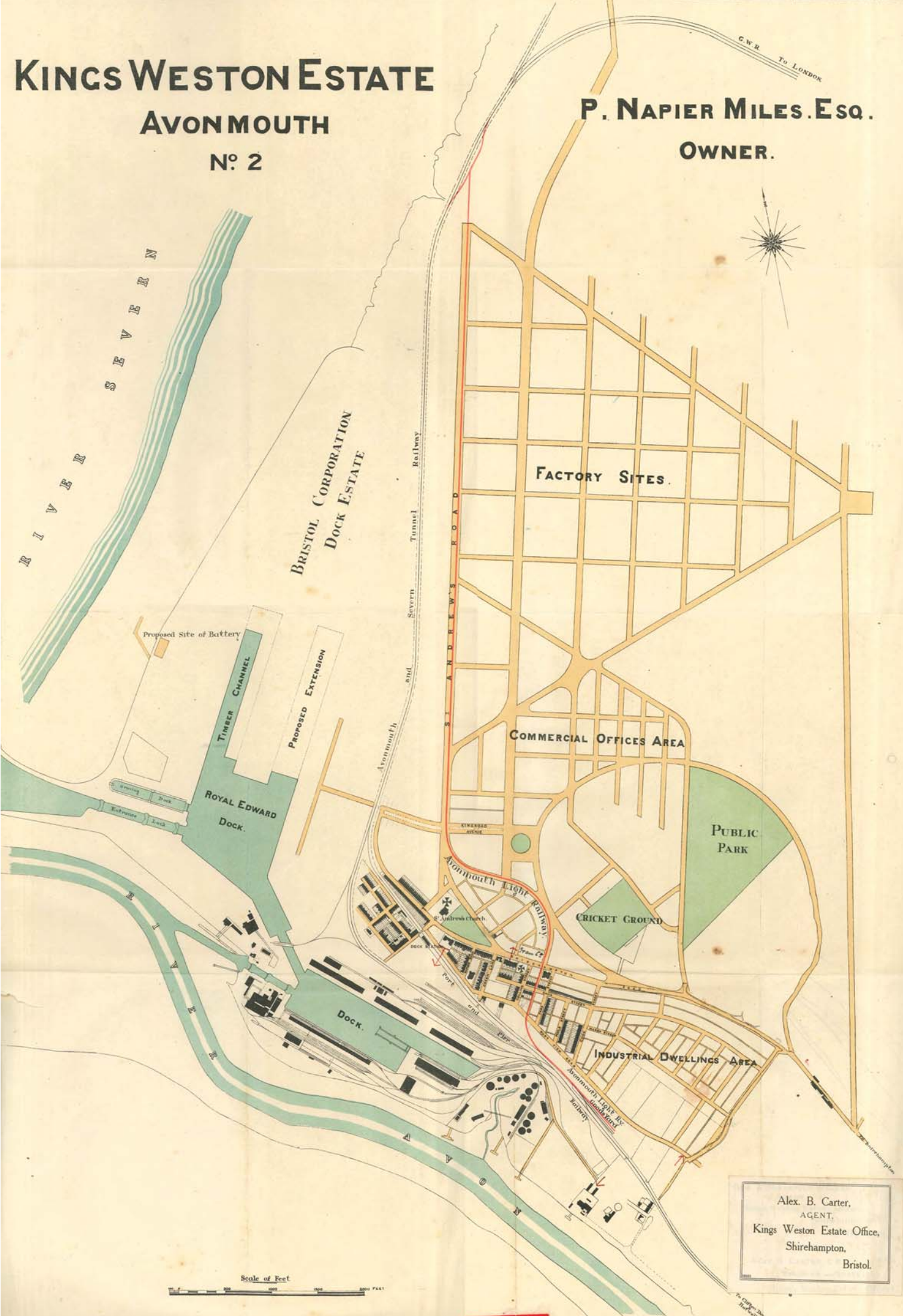
# KINGS WESTON ESTATE

## AVONMOUTH

### Nº 2

P. NAPIER MILES. ESQ.

OWNER.



OWNER—PHILIP NAPIER MILES.

RESIDENT AGENT—

~~IVOR AUGUSTUS FORESTIER WALKER,~~

Kings Weston Estate Office,

Shirehampton, Bristol.

Reg. Telegraphic Address—"WESTWARD, SHIREHAMPTON."

Nat. Telephone—No. 21 STOKES BISHOP.

SURVEYOR—ALEXANDER B. CARTER,

Kings Weston Estate Office, Shirehampton, Bristol.

**ERNEST NEWTON. A.R.A.**

ARCHITECT—~~FREDERICK BLIGH BOND, F.R.I.B.A.,~~

~~Star Life Buildings, Bristol.~~

Nat. Telephone—No. ~~794~~

**1684 CITY**

**GRAY'S INN**

**LONDON. W.C.**

CONSULTING ENGINEERS—

THOS. KIRKLAND, M. INST. C.E.,

PROFESSOR CAPPER. M. INST. C.E.,

17, Victoria Street, Westminster,

London, S.W.

Telephone No. 5255 Westminster.

SOLICITORS—OSBORNE, WARD, VASSALL & Co.,

41, Broad Street, Bristol.

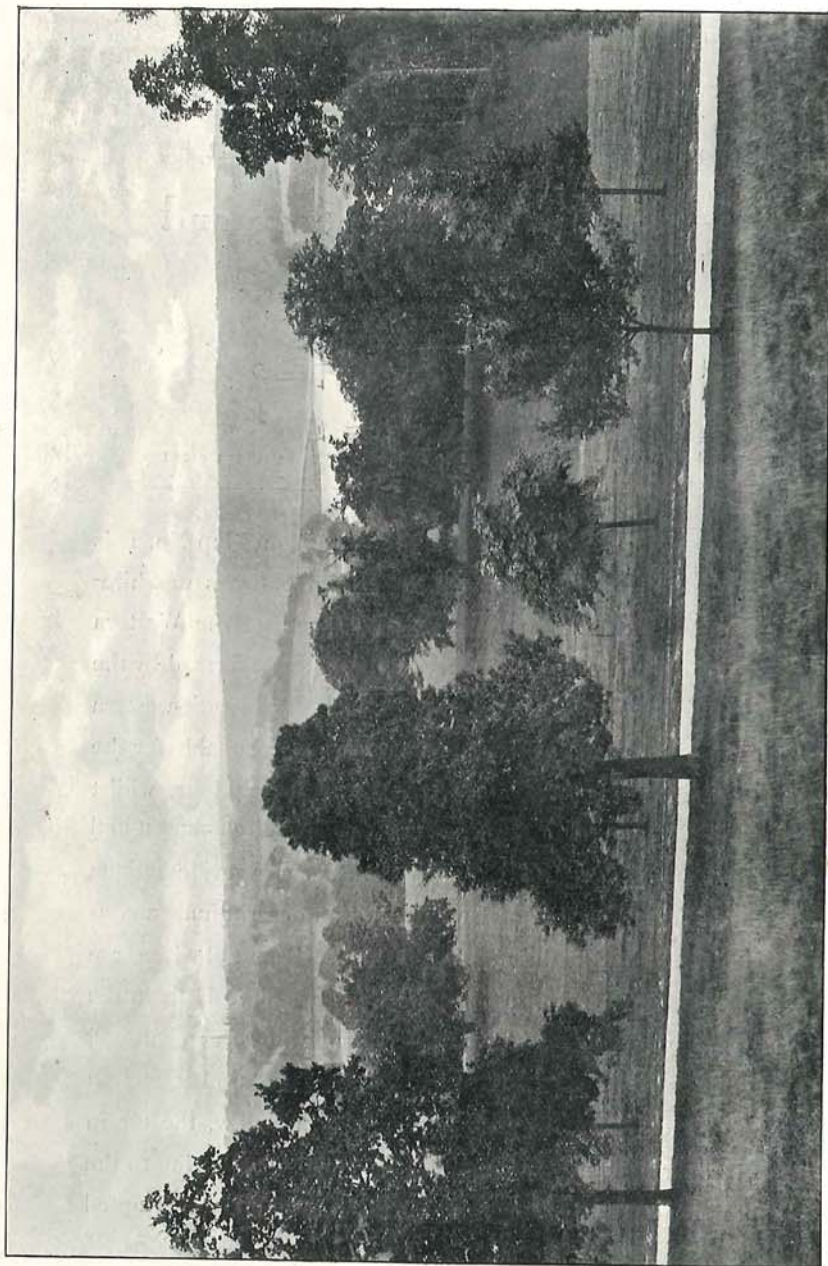
Telephone No. 93.

BANKERS—

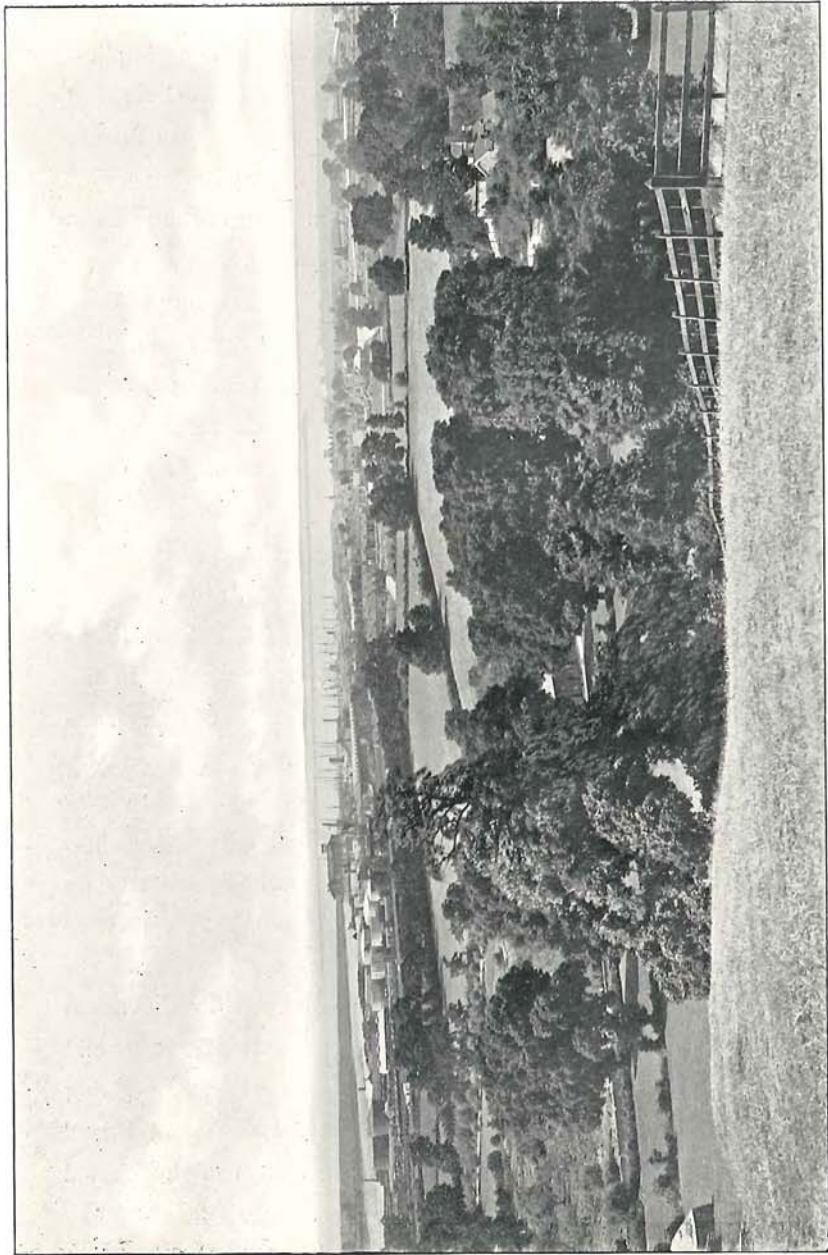
UNION OF LONDON & SMITH'S BANK, LTD.,

Corn Street, Bristol.



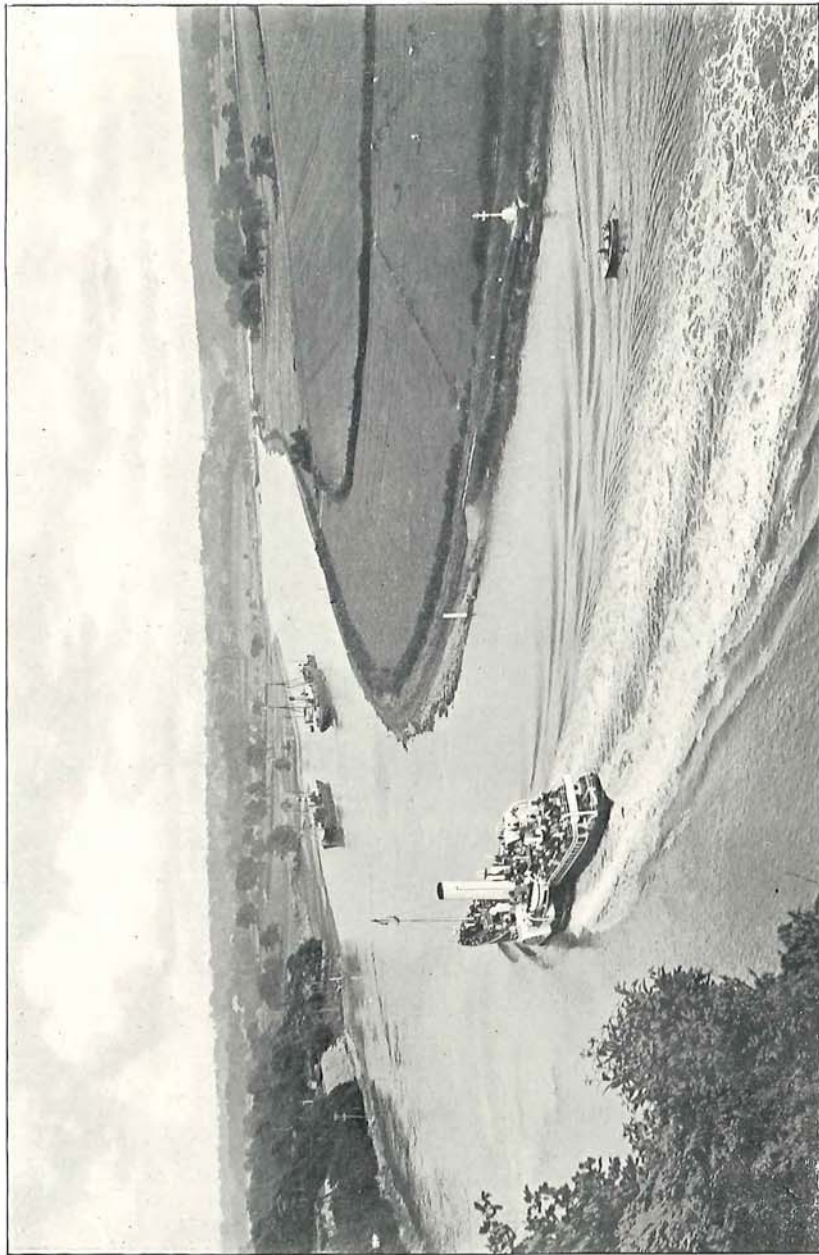


AVON GORGE FROM TERRACE, KINGS WESTON (LOOKING SOUTH-EAST)

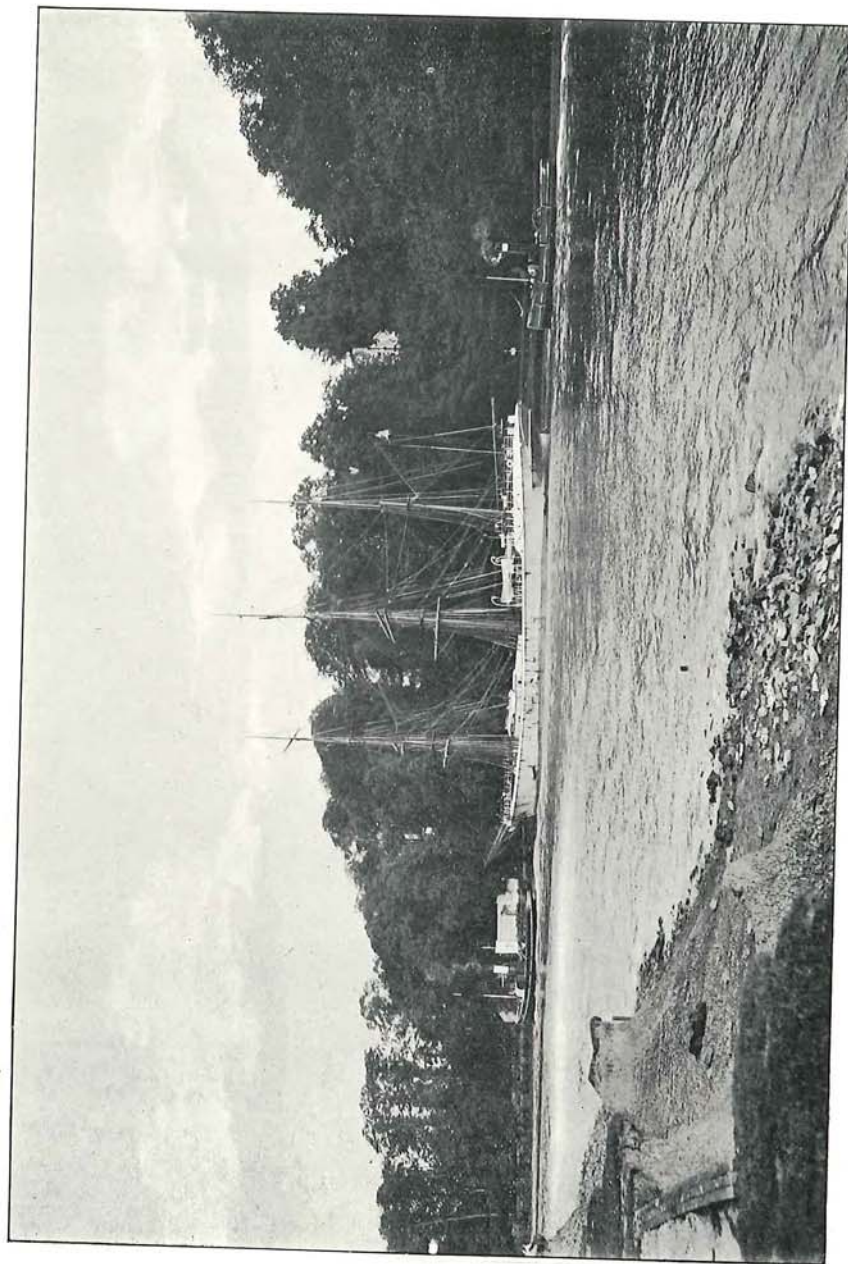


AVONMOUTH FROM TEN POLE POINT.





HORSESHOE BEND (LOOKING SOUTH-EAST) FROM SHIREHAMPTON PARK.

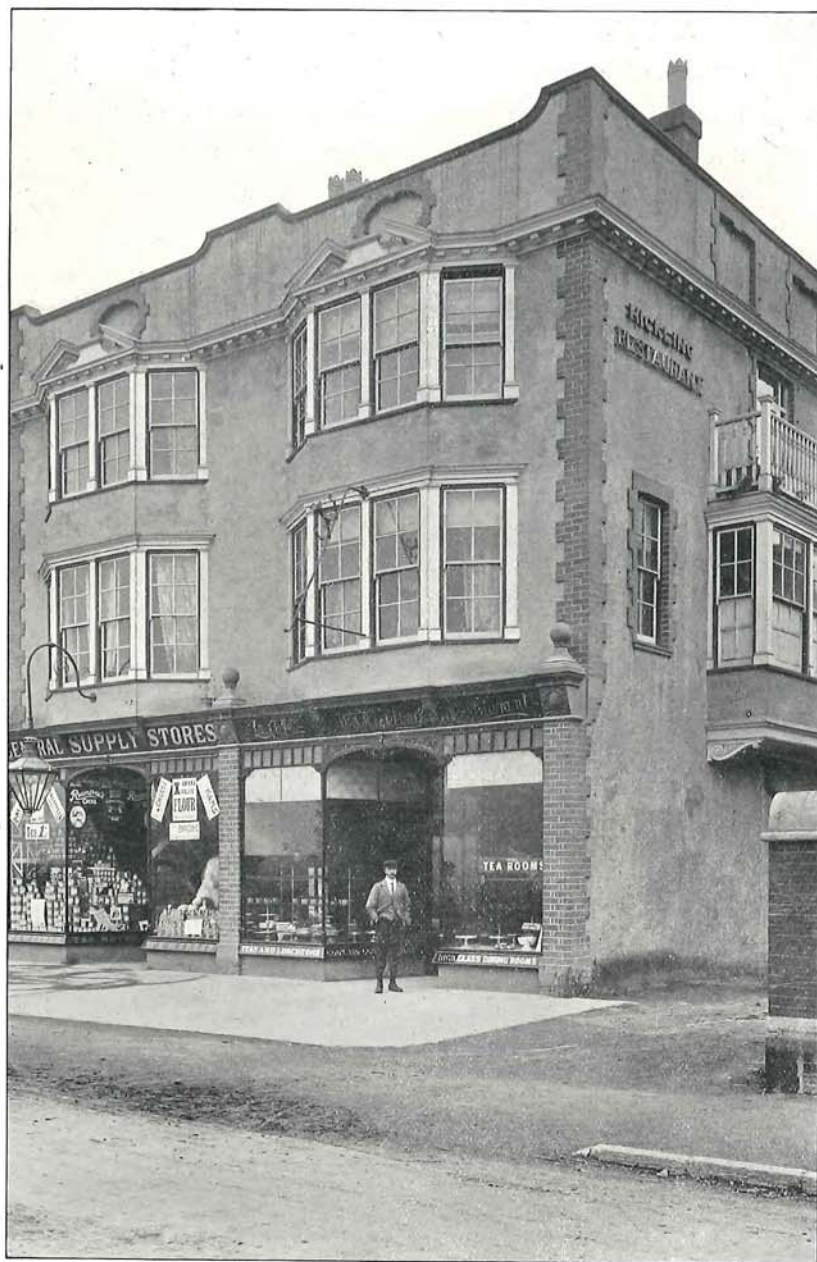


AVON RIVER AT HUNGROAD.



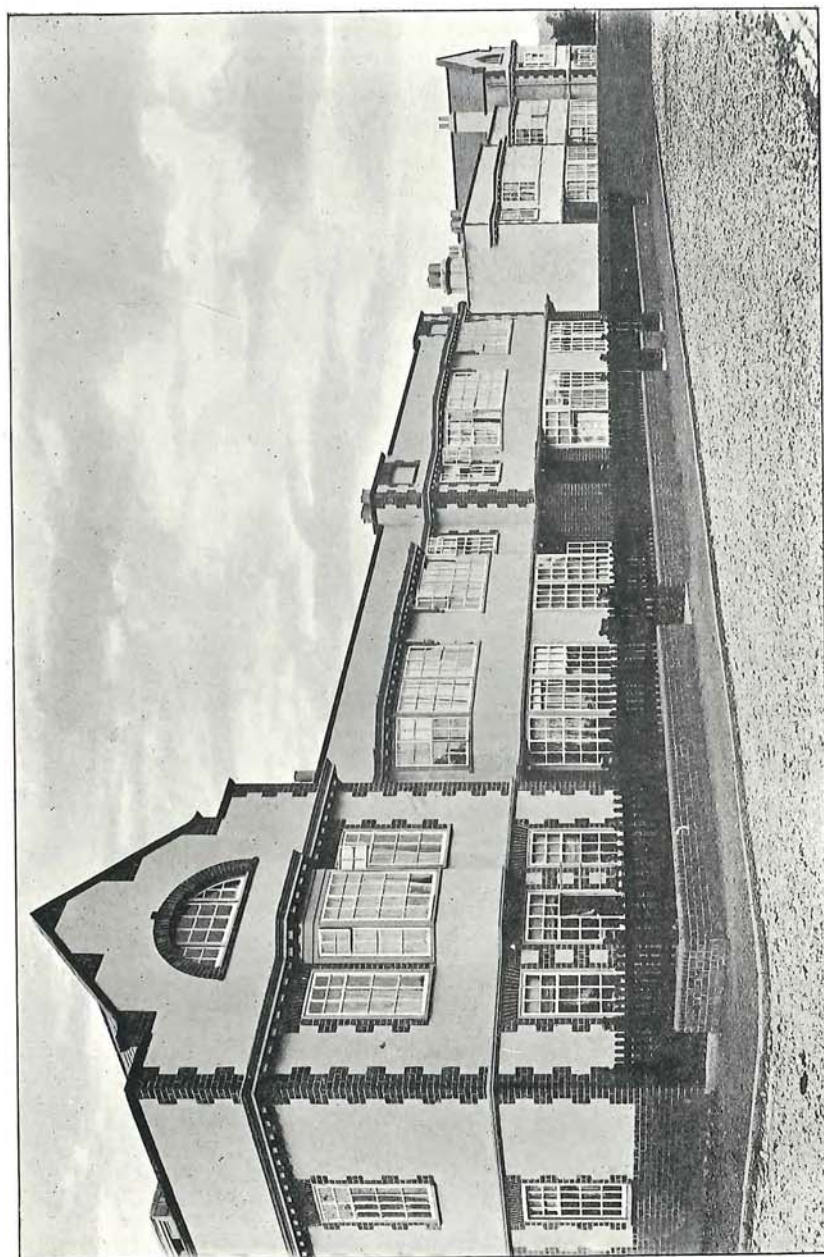
A considerable area as shewn on Map No. 2 is being laid out with wide tree-planted roads for the erection of Industrial Dwellings with large Gardens. Already numbers of these dwellings are built and others are in course of erection. The water supply laid in roads and to all houses at a reasonable charge is pure, unfailing and of exceptionally good quality conducted by mains from the Bristol Water Works Company's magnificent and never failing Reservoirs in the Mendip Hills. A plentiful supply of gas of good quality at a reasonable price is provided by mains from the Bristol Gas Company's Works in Bristol. Electricity for light and power it is expected will shortly be available at a moderate price.

Sites for Factories and Works of all descriptions, also for Blocks of Industrial and single Dwellings will be sold on moderate terms subject to reserved Ground Rents. Particulars respecting sites, terms and conditions, and any other information desired will be furnished free of charge on application by letter to the Resident Agent, whose address is given in the list of Officials.

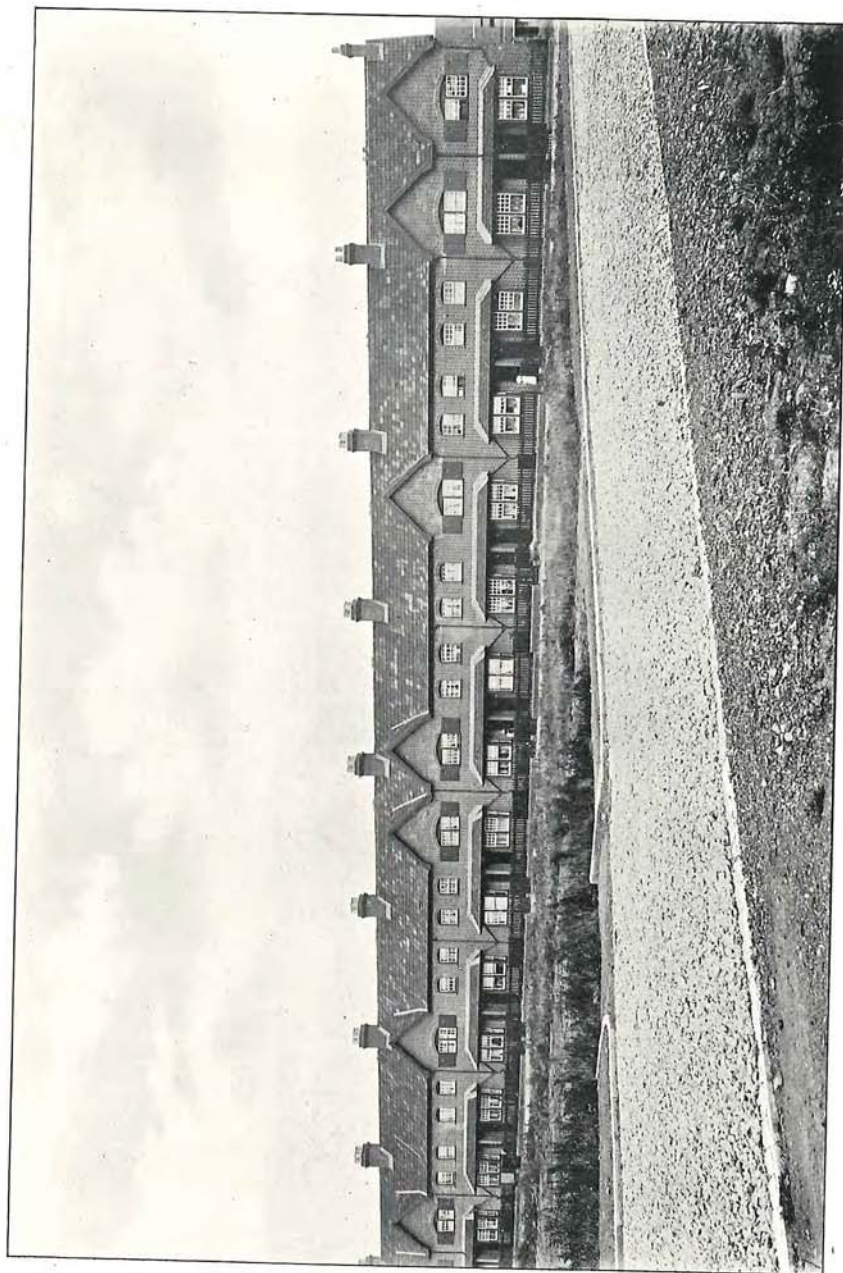


RICHMOND BUILDINGS, AVONMOUTH.



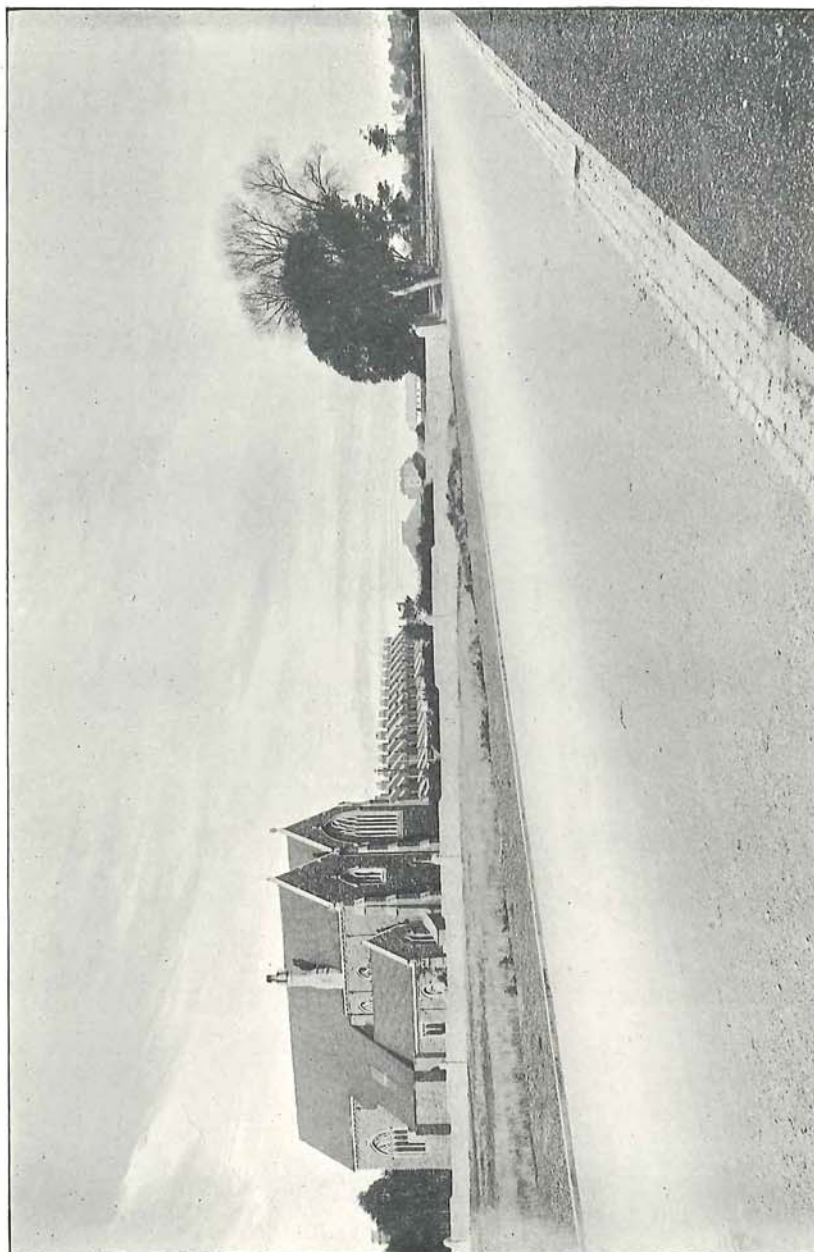


WORKMEN'S DWELLINGS, DAVIS STREET, AVONMOUTH.

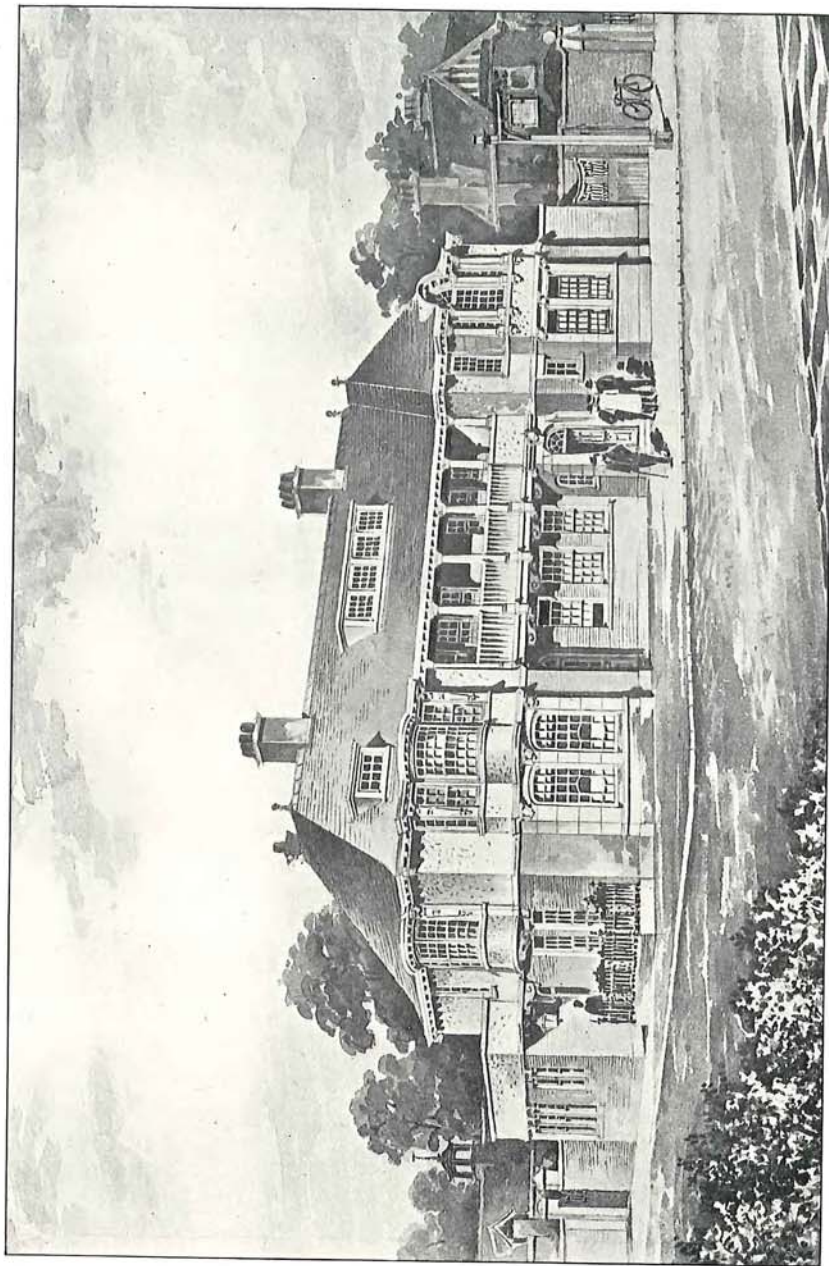


WORKMEN'S DWELLINGS, FARR STREET, AVONMOUTH.



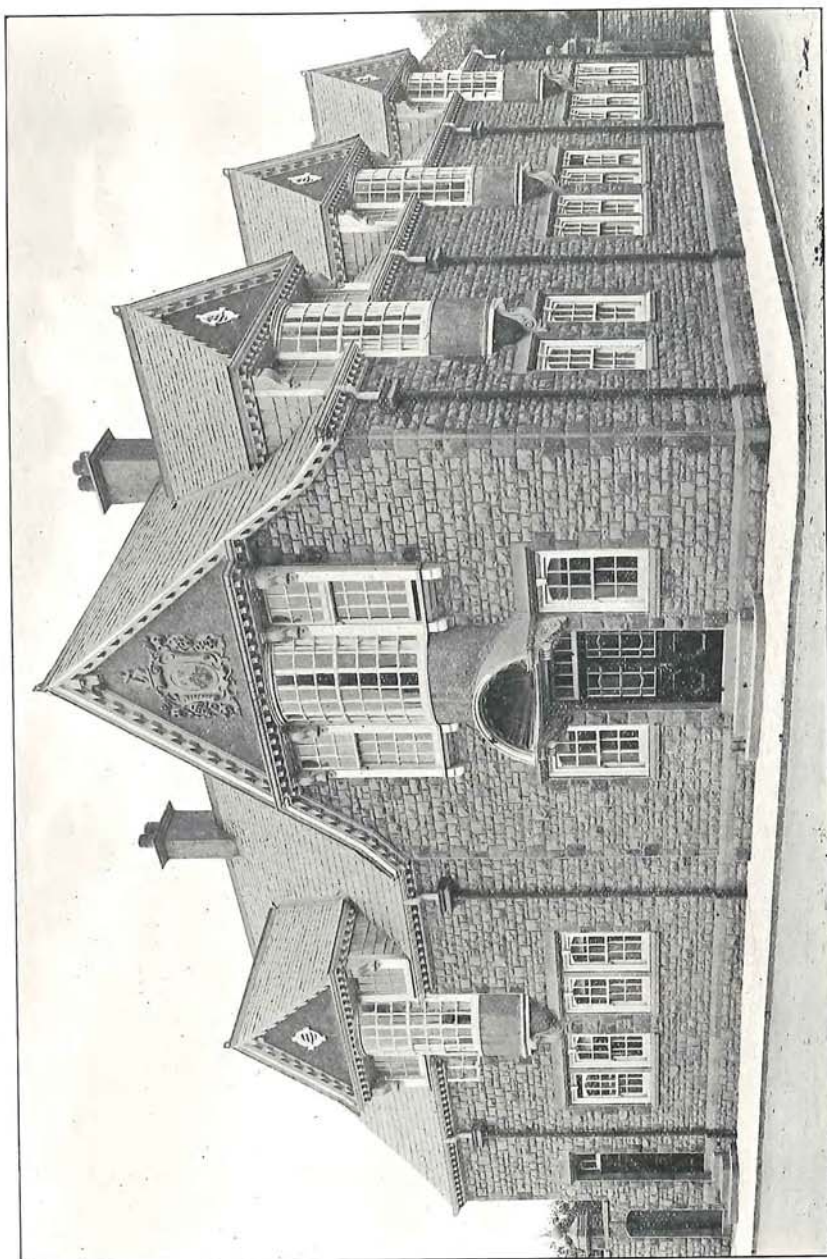


ST. ANDREW'S CHURCH, AVONMOUTH.

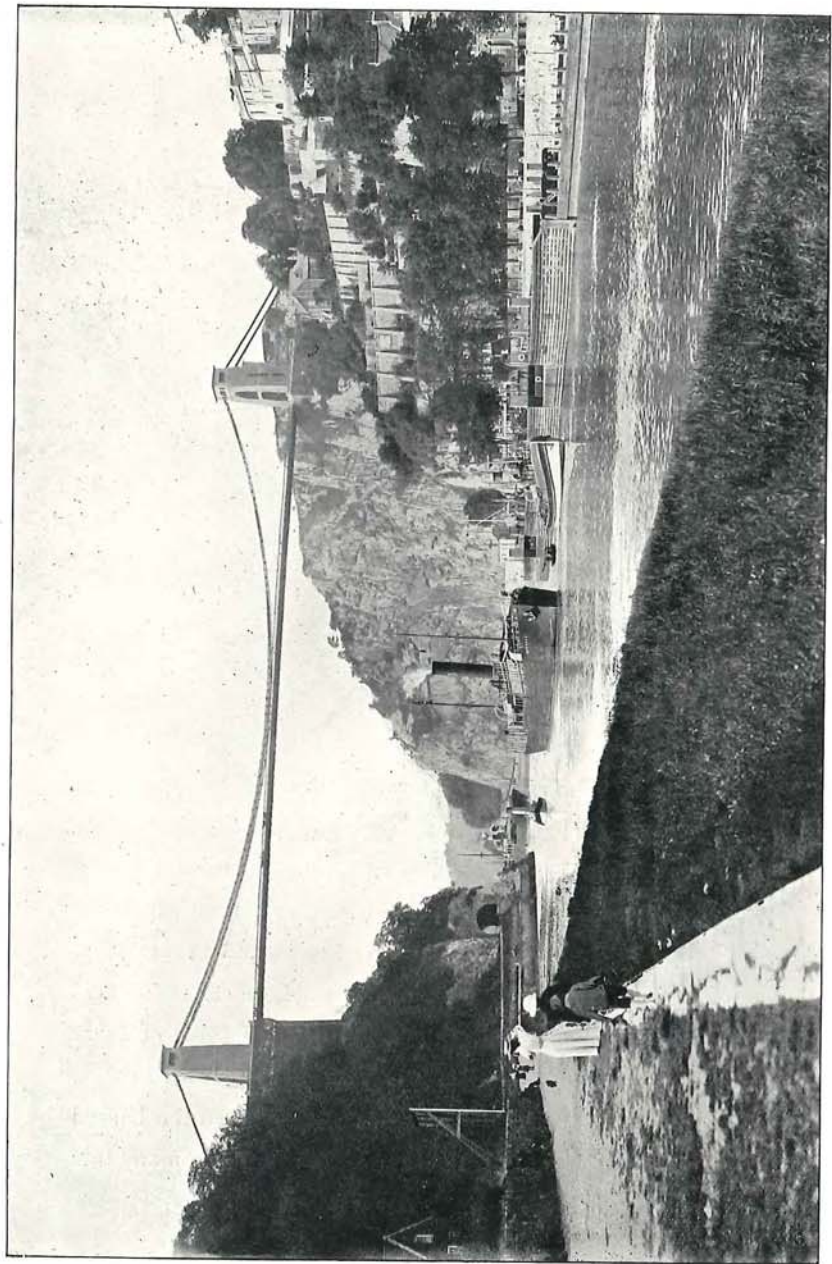


THE MILES' ARMS, AVONMOUTH.





KINGS WESTON ESTATE OFFICE, SHIREHAMPTON.



CLIFTON SUSPENSION BRIDGE AND RIVER AVON,  
FROM THE SOMERSETSHIRE SIDE.



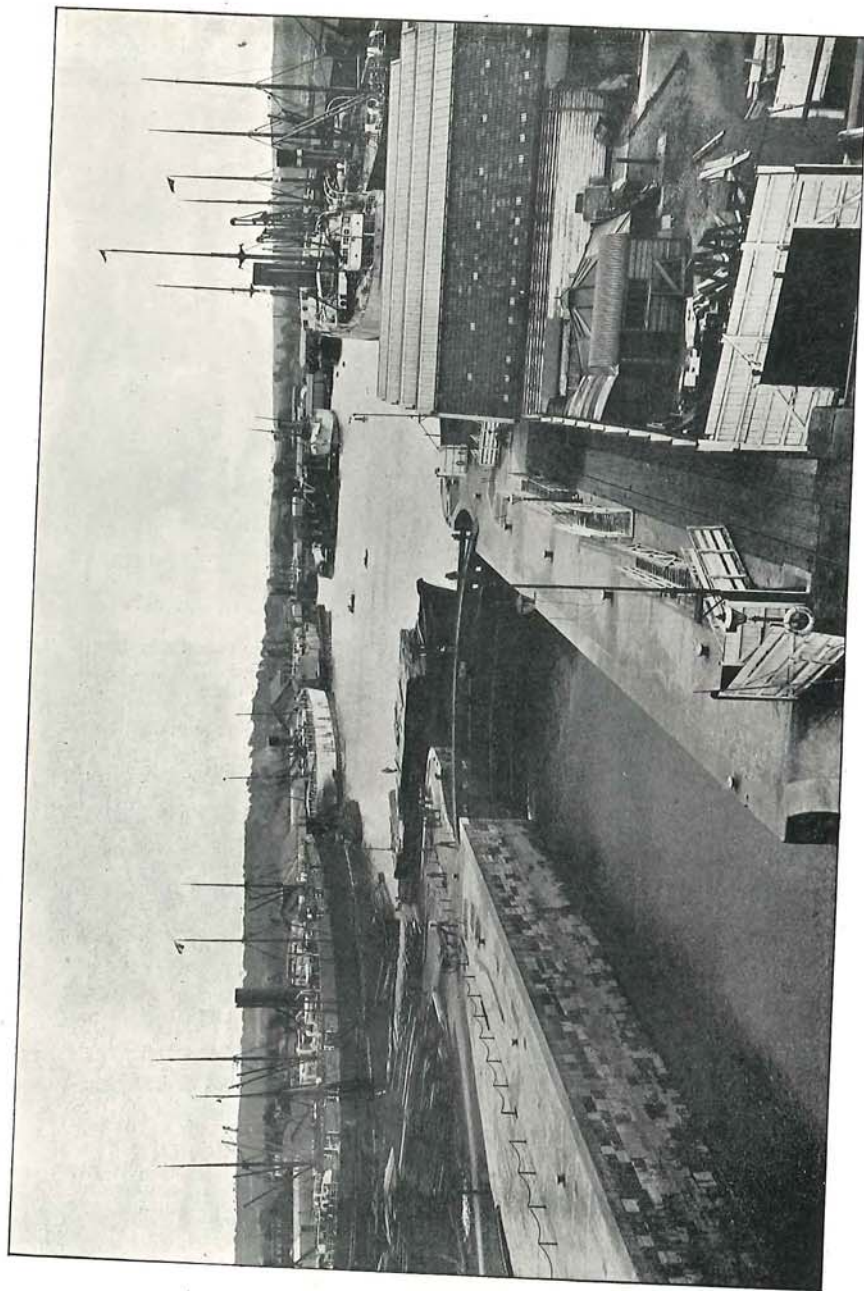
Bristol enjoys many advantages over other Ports in the United Kingdom as regards the ease and safety of navigating the approaches to the Port, and nautical experts of the highest authority and experience have reported as to the practicability of vessels of 500, 600 and 700 feet in length, and from 24 to 28 feet draft of water navigating between Lundy Island, Walton Bay, and Kingroad at all states of the tide in all weathers.

### OCEAN TRADE.

Lines of Steamers with fixed sailings trade between Avonmouth Dock and all parts of the World. There is an extensive traffic with Canada, from Montreal in summer, and Portland and St. John in winter. There are also steamers to and from various Ports of North and South America, Australia and South Africa, and the most efficient services to and from all parts of the Continent of Europe. The Steamers of the Imperial Direct West India Mail Service sail fortnightly between Bristol and Kingston, Jamaica.

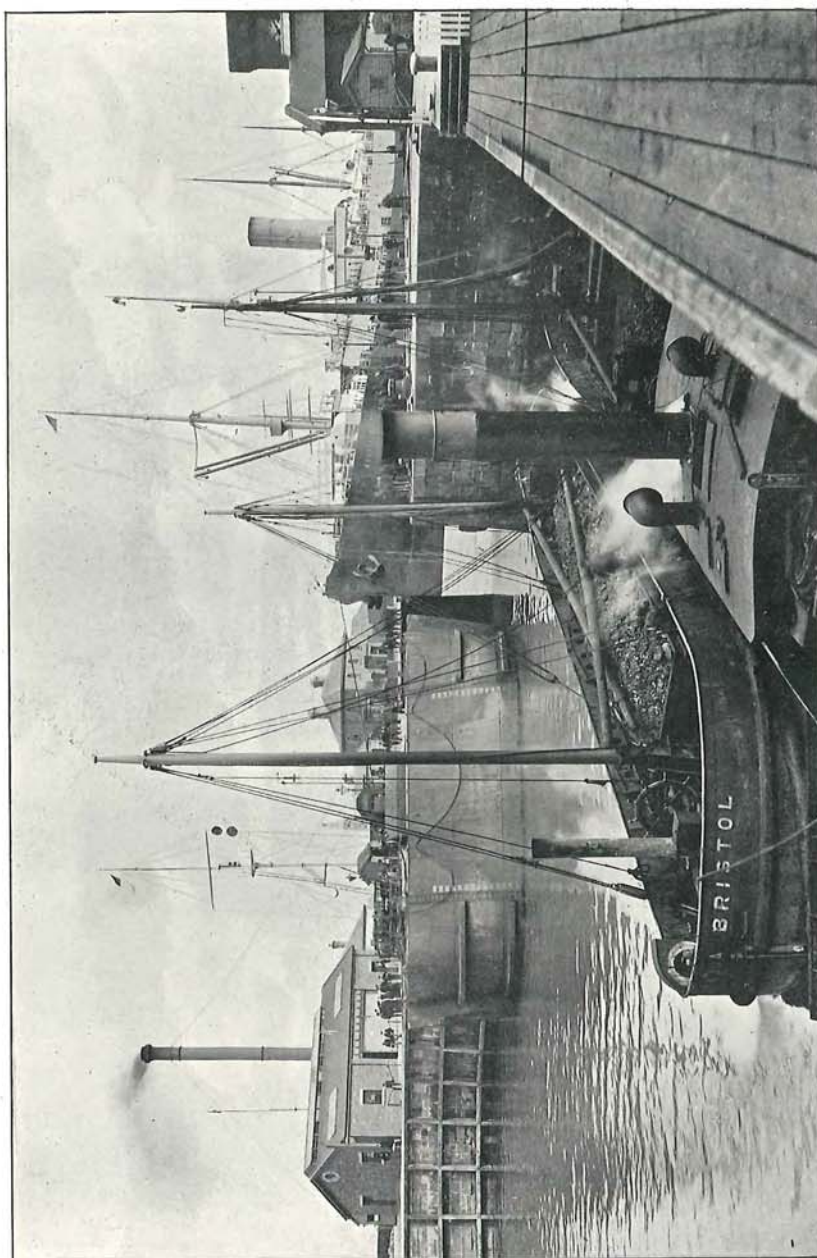
### DOCK EQUIPMENT.

The Dock is equipped with foreign animals' wharves, slaughter houses, chill rooms, cold storage chambers, granaries, transit and other sheds, elevators, hydraulic cranes, and a floating pontoon dock. There are railways alongside the quays in direct communication with the principal Railway Companies.

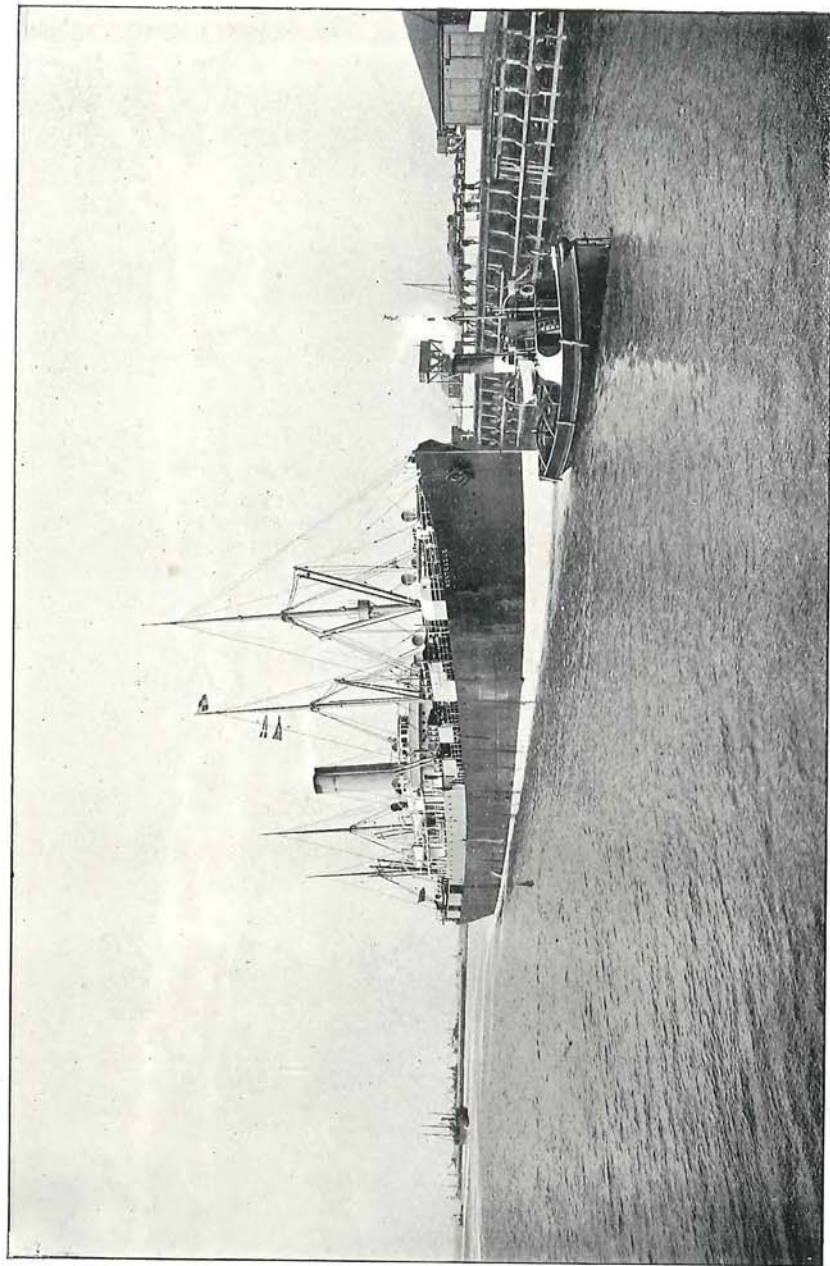


ENTRANCE LOCK, AVONMOUTH DOCK





ENTRANCE LOCK, AVONMOUTH DOCK—SHEWING CAISSON.



S.S. "MONTEAGLE" ABOUT TO ENTER AVONMOUTH DOCK.



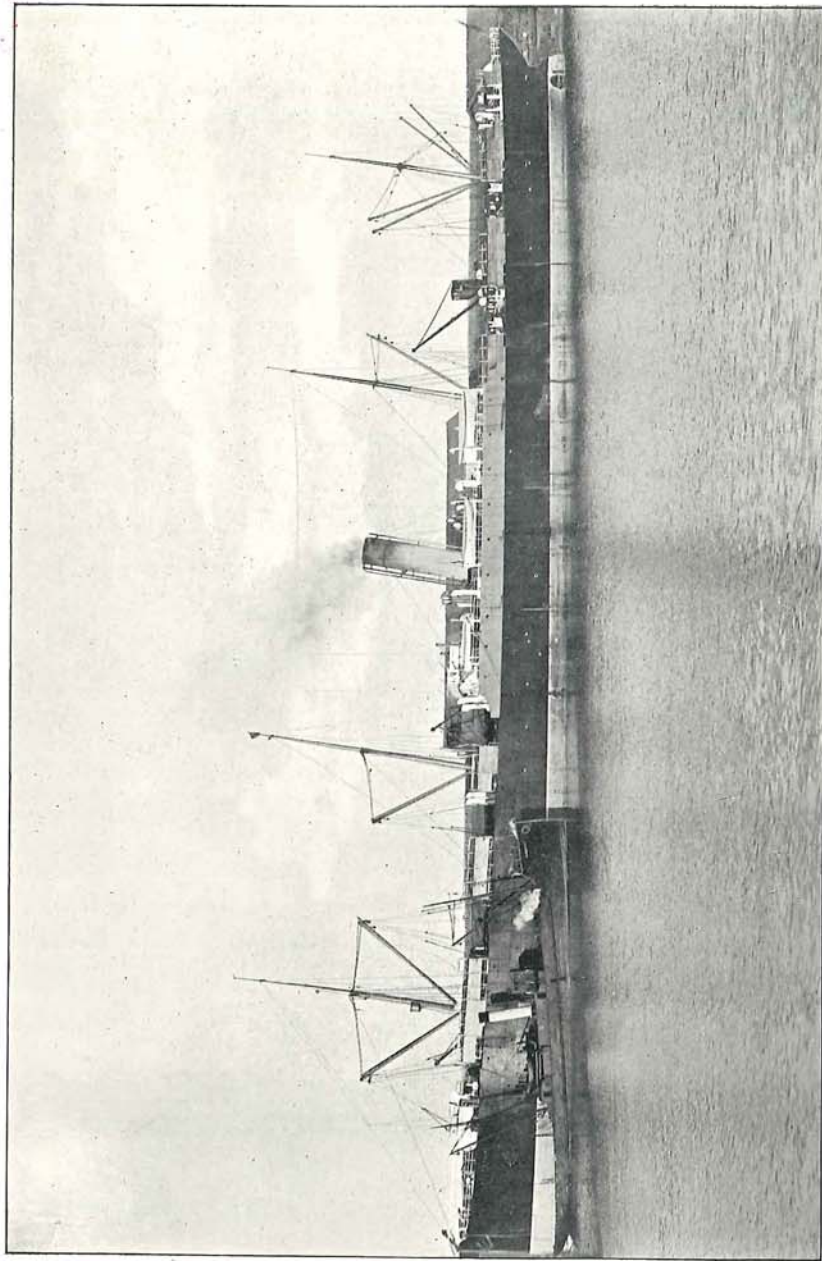
## NEW DOCK.

Although vessels with a capacity up to 7000 tons of cargo can be accommodated at the existing Dock it is often congested with traffic and the Corporation of Bristol have undertaken the construction of a new dock at a cost of about £2,000,000. This Dock will be completed in 1907, and as will be seen from the accompanying plan has a connection with the existing dock. There will be a water area of 30 acres with ample space for subsequent extension, and a graving dock 850 feet long. The Lock has been designed to accommodate the largest vessels and will be 850 feet in length, and 100 feet in breadth with a depth on the inner sill of 36 feet at ordinary spring tides. The wharves will be equipped with the most efficient type of sheds, cranes and elevators for dealing rapidly and economically with the cargoes of vessels of 12,000 to 20,000 tons capacity.

## RAILWAY CONNECTIONS.

The position of Avonmouth situated as it is at the head of the Bristol Channel provides the Port with a larger serving area round it than almost any Port in the Kingdom. It is nearer by two hours to London from New York by water and rail combined than via Southampton, and three hours than via Liverpool. There is a population of between 9 and 10 millions within a convenient area of distribution.

It commands favourable railway rates, and goods can be forwarded direct from the ship's side to all the great manufacturing towns in the Midland Districts and vice versa. The Severn Tunnel also brings Avonmouth within a short distance



S.S. "MONTCALM" IN AVONMOUTH DOCK.

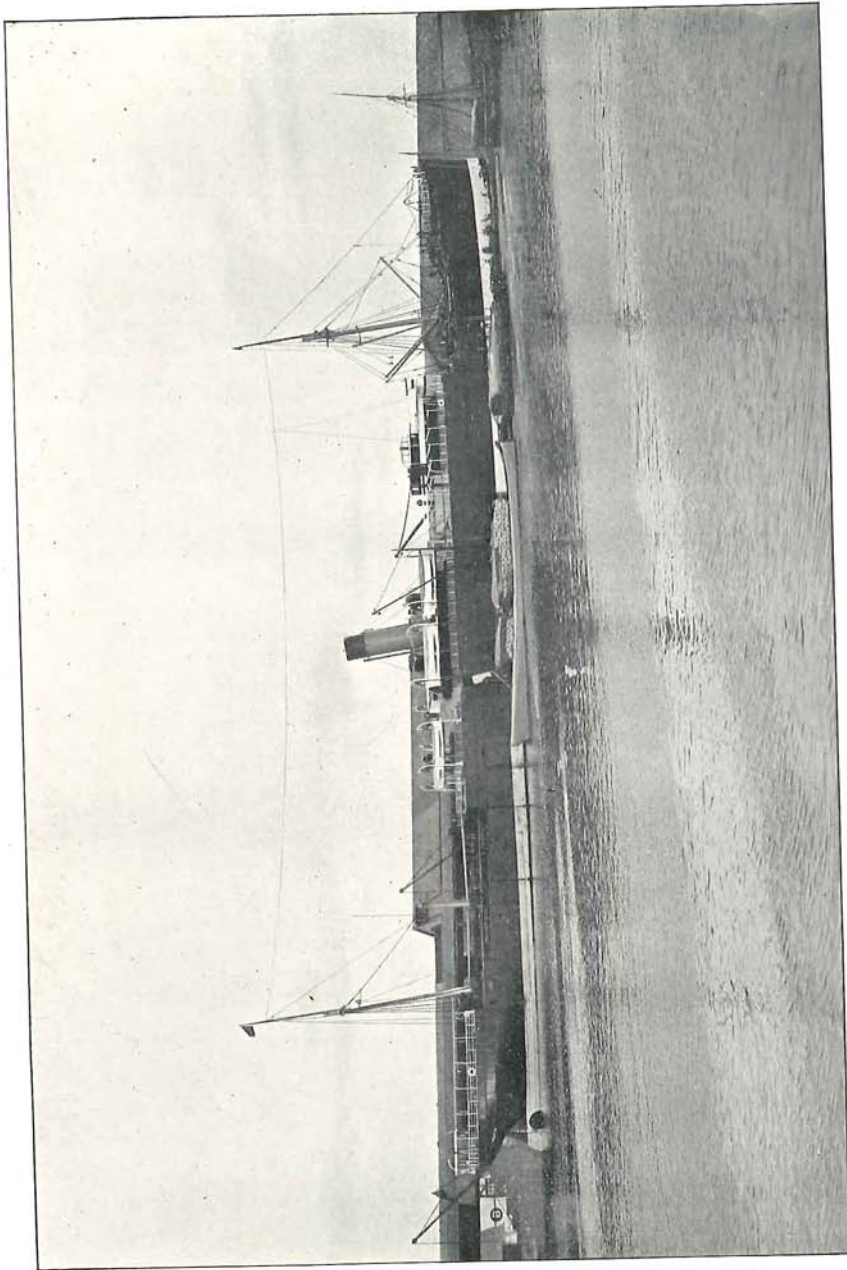


of the great and growing Mining population in South Wales, which has always derived from Bristol its chief supply of American and Canadian Grain, Flour, Bacon and Hams, Canned Goods, Cheese and other provisions. As the great market for the West and South-west portion of the United Kingdom the City of Bristol has enjoyed considerable prestige from time immemorial.

A recent writer on the subject of Bristol's Dock and Railways says:—"There can be little doubt that Bristol possesses a unique geographical position for the development of commerce and trade, and the record of the City clearly shews that this fact was fully recognised and appreciated by bygone generations. Those whose business it has been to manage and control the dock estate may not always have been quite alive to the importance of keeping abreast of competing ports, but it may be admitted that they are now striving to the utmost that their City may recapture that foremost place in the Mercantile World which formerly she enjoyed, whatever has been her lot in recent times."

### WATER TRANSPORT.

Cheap and effective means of transport in addition to the railway service are also provided by regular lines of steamers trading not only to Bristol Channel Ports and by the Severn to the Midlands, but also to Hull, London, Penzance, Liverpool, and various Scotch and Irish Ports.

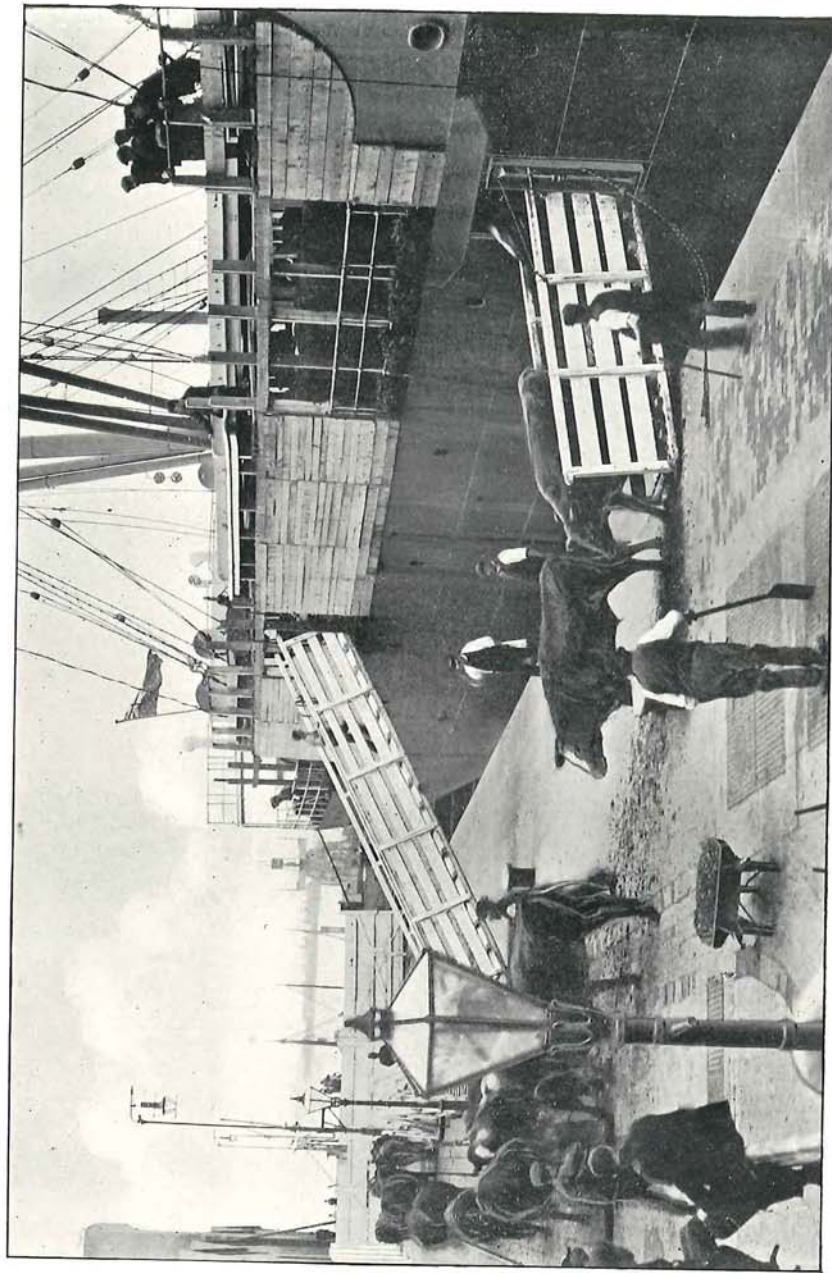


S.S. "CITY OF VIENNA" IN AVONMOUTH DOCK.



## LAND FOR NEW WORKS.

A large area of land adjoining the New Dock is available and most suitable for the erection of sugar refineries, oil, flour and cotton mills, machinery and iron works, ship yards, and other industries for which proximity to the seaboard and means of rapid connection with the interior are essential. The cheap and abundant supply of Welsh, Local and Midland Coal places the Port in a superior position both as regards coal for the use of steamers and also for large manufacturing concerns.

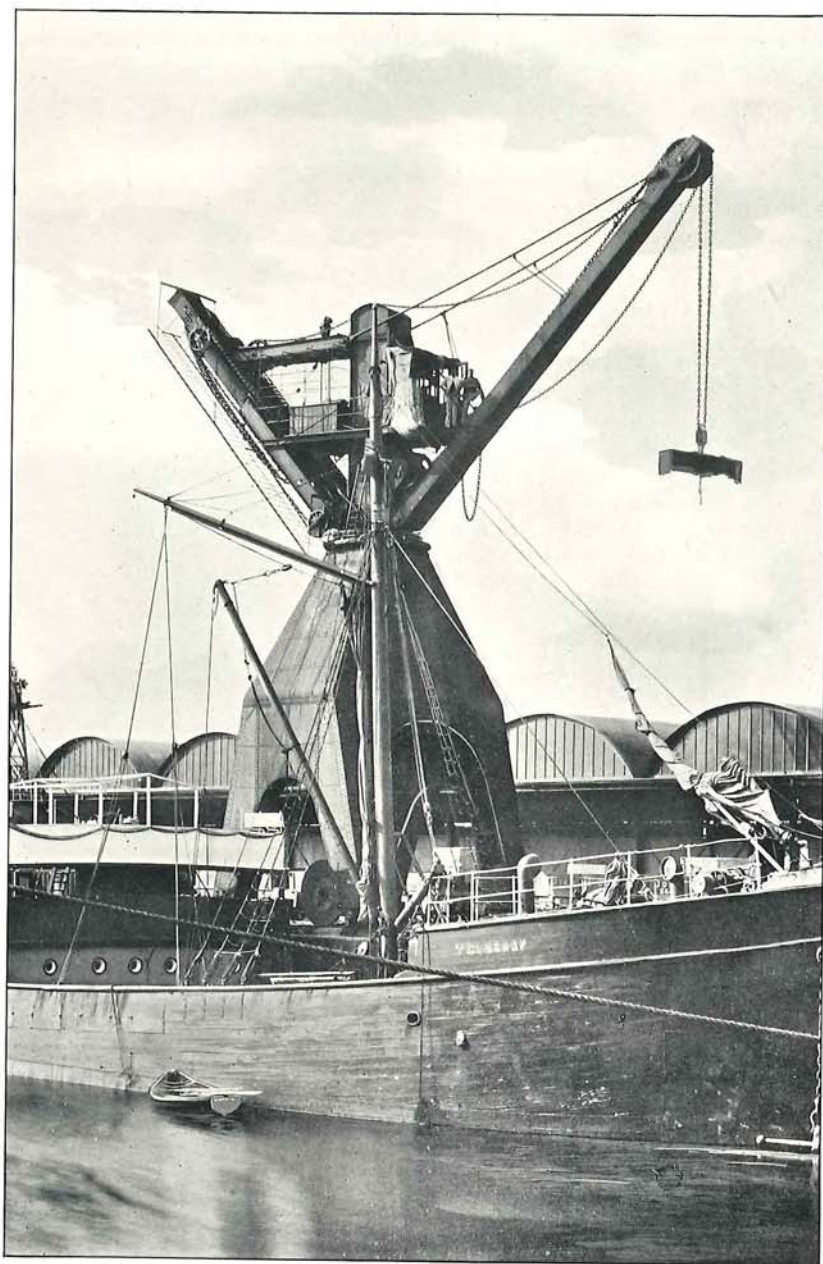


CATTLE UNLOADING AT AVONMOUTH DOCK.



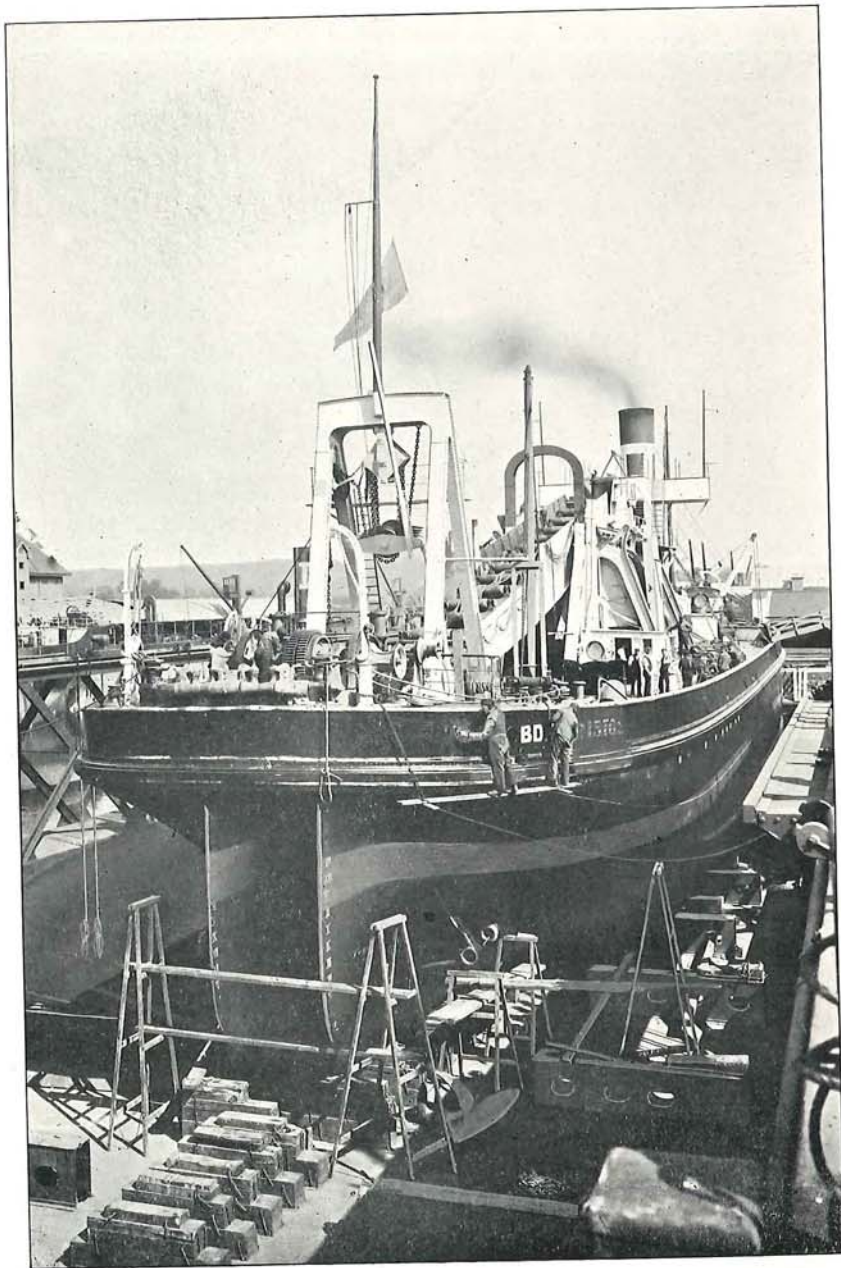


ARMSTRONG'S HYDRAULIC COALING CRANE, AVONMOUTH DOCK.

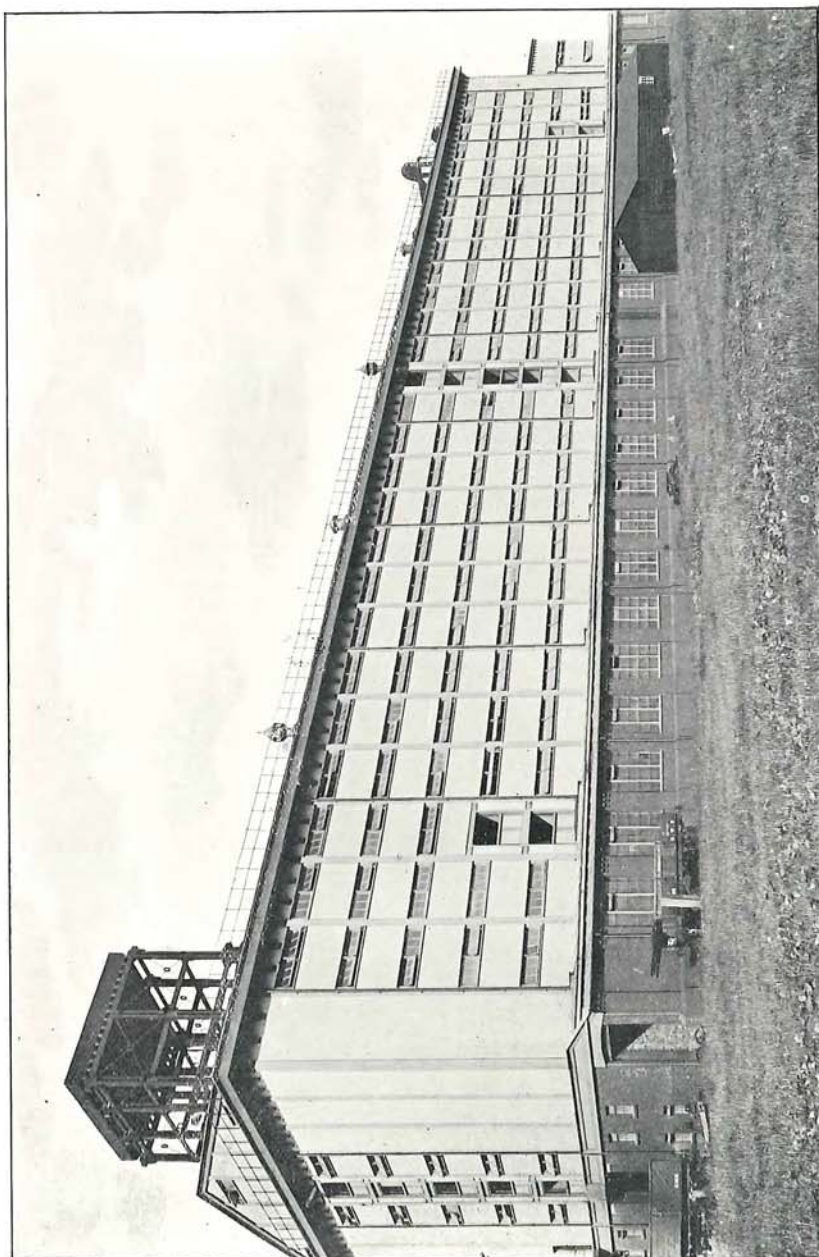


ARMSTRONG'S HYDRAULIC COALING CRANE (AT WORK)  
AVONMOUTH DOCK.





PONTOON DOCK, AVONMOUTH—BRISTOL DREDGER REPAIRING



GRANARY, AVONMOUTH DOCK.

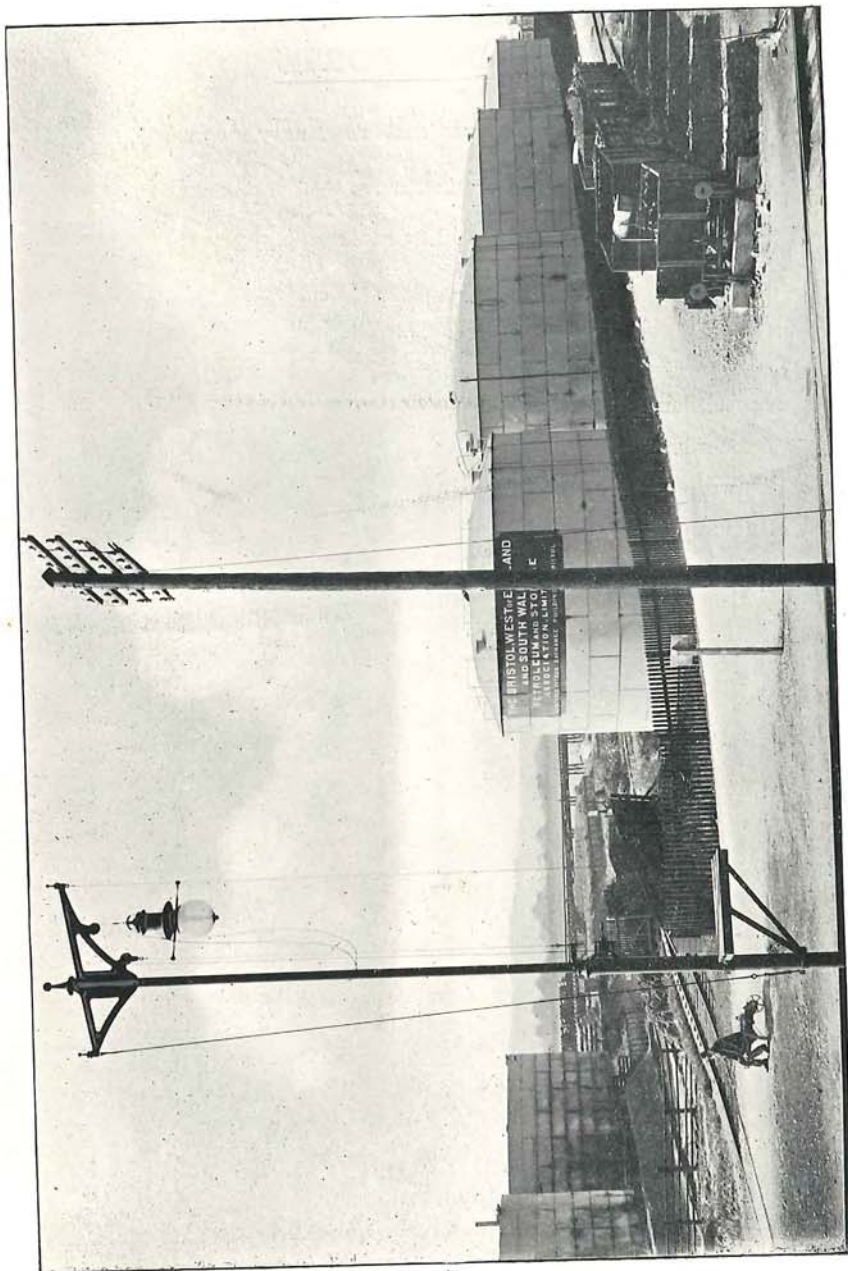


## FOREIGN PORTS

to which Steamers sail regularly from  
the Port of Bristol . . .



Place.	Service.	Owners or Agents
Adelaide ..	Monthly ..	Bethell, Gwynn & Co.
Algoa Bay ..	Monthly ..	H. P. Houston & Co.
Amsterdam ..	Fortnightly ..	Turner, Edwards & Co.
Amsterdam ..	Weekly ..	Bristol Steam Navigation Co.
Antwerp ..	Weekly ..	Do.
Antwerp ..	Fortnightly ..	Turner, Edwards & Co.
Beira ..	Monthly ..	H. P. Houston & Co.
Bordeaux ..	Fortnightly ..	Turner, Edwards & Co.
Boston ..	Fortnightly ..	H. R. James & Sons
Boulogne ..	Fortnightly ..	E. Stock & Sons
Brisbane ..	Monthly ..	Bethell, Gwynn & Co.
Buenos Ayres ..	Monthly ..	Do.
Catania ..	Every six weeks	Chessell & Co.
Cadiz ..	Fortnightly ..	Turner, Edwards & Co.
Cape Town ..	Monthly ..	H. P. Houston & Co.
Charente ..	Fortnightly ..	Turner, Edwards & Co.
Delagoa Bay ..	Monthly ..	H. P. Houston & Co.
Durbar ..	Monthly ..	Do.
East London ..	Monthly ..	Do.
Fredrickstadt ..	Fortnightly ..	M. Whitwill & Son
Genoa ..	Every six weeks	Chessell & Co.
Guernsey ..	Fortnightly ..	M. Whitwill & Son
Hamburg ..	Weekly ..	E. Stock & Son

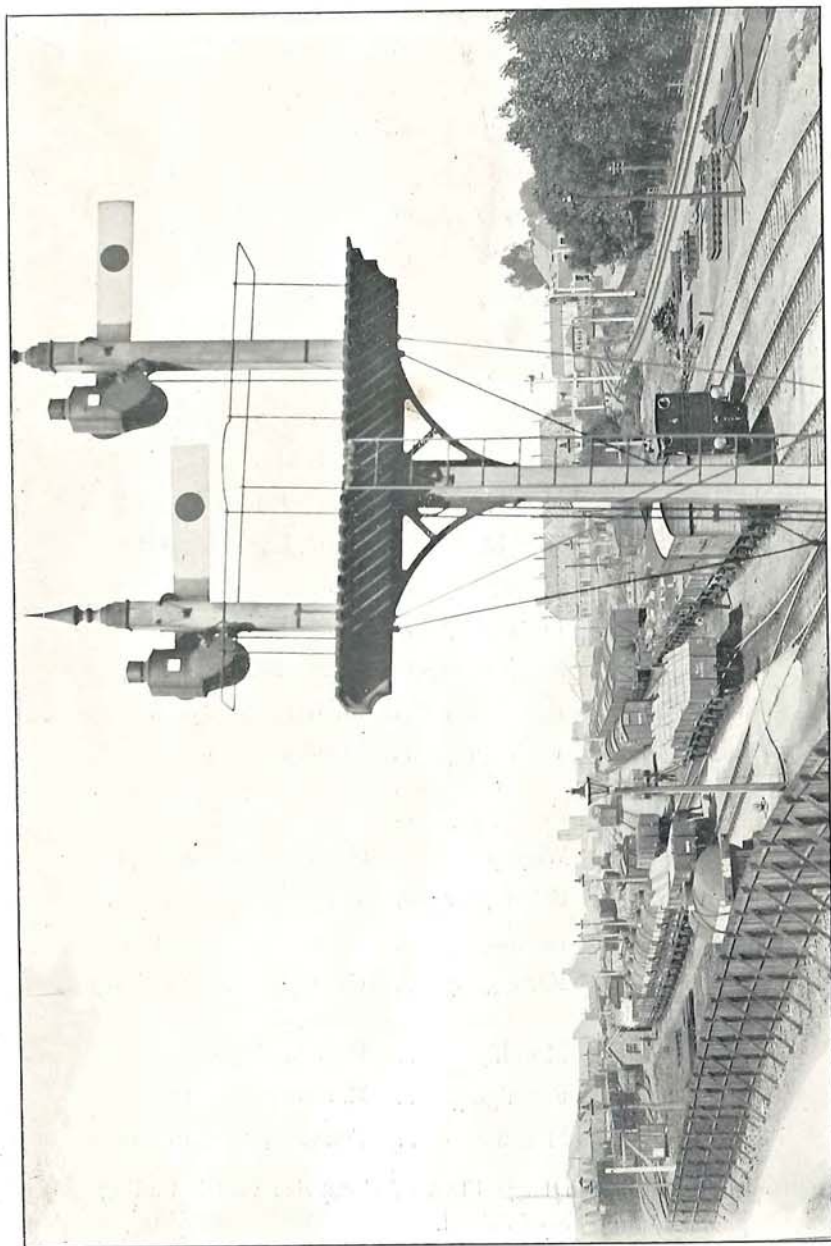


OIL TANKS, AVONMOUTH DOCK.



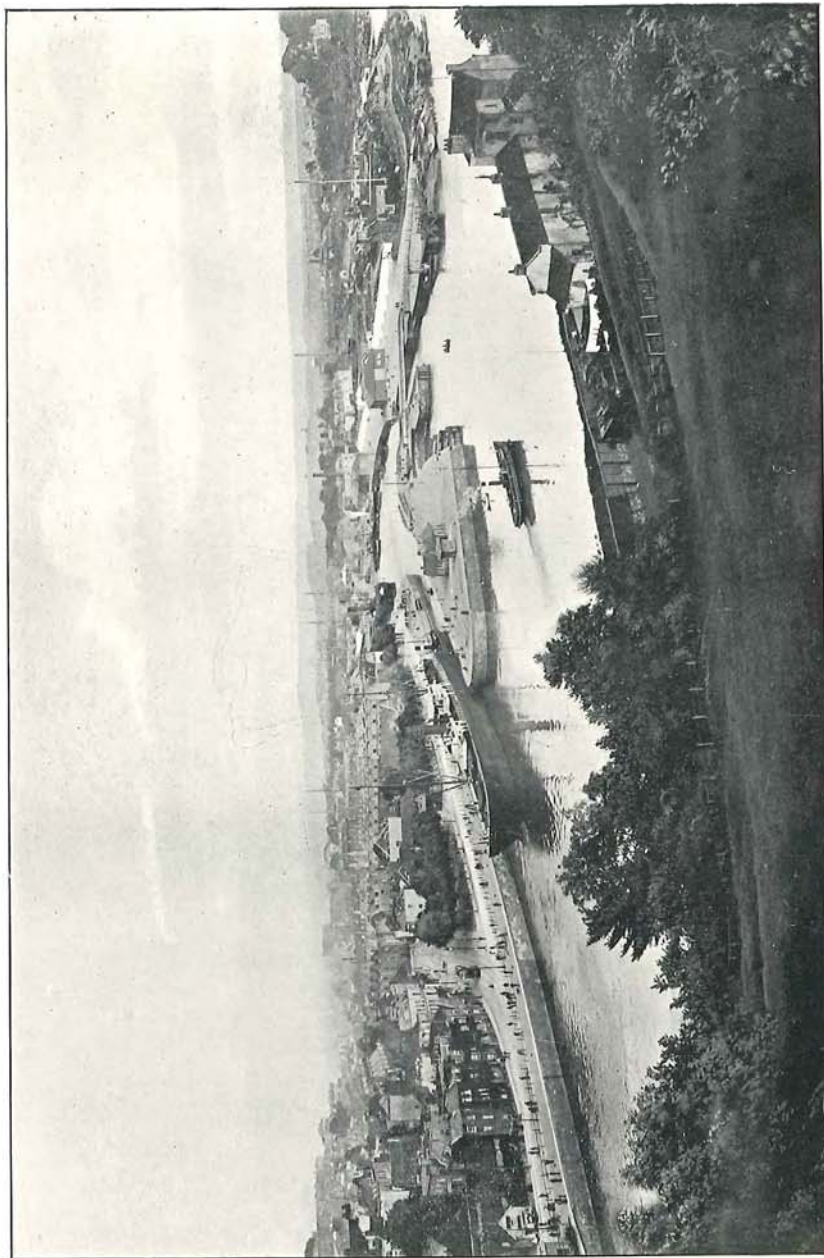
Place	Service.	Owners or Agents
Jersey	.. Fortnightly ..	M. Whitwill & Son
Kingston (Jamaica)	Fortnightly ..	Elder, Dempster & Co.
Lisbon	.. Fortnightly ..	Turner, Edwards & Co.
Leghorn	.. Every six weeks	Chessell & Co.
La Plata	.. Monthly ..	Bethell, Gwynn & Co.
Melbourne	.. Monthly ..	Do.
Monte Video	.. Monthly ..	Do.
Messina	.. Every six weeks	Chessell & Co.
Montreal	.. Weekly ..	Elder, Dempster & Co.
Montreal	.. Weekly ..	Dominion Line
Mossell Bay	.. Monthly ..	H. P. Houston & Co.
Natal	.. Monthly ..	Do.
New York	.. Weekly ..	H. R. James & Sons
Nantes	.. Fortnightly ..	Turner, Edwards & Co.
Oporto	.. Fortnightly ..	Do.
Palermo	.. Every six weeks	Chessell & Co.
Philadelphia	.. Fortnightly ..	M. Whitwill & Son.
Portland (Maine)	Fortnightly .. (in Winter)	Dominion Line
Quebec	.. Fortnightly ..	Do.
Quebec	.. Weekly ..	Canadian Pacific Railway
Rotterdam	.. Fortnightly ..	Turner, Edwards & Co.
Rosario	.. Monthly ..	Bethell, Gwynn & Co.
St. John (New Brunswick)	.. Fortnightly ..	Canadian Pacific Railway
Sydney	.. Monthly ..	Bethell, Gwynn & Co.
Treport	.. Fortnightly ..	E. Stock & Sons
Three Rivers	.. Monthly ..	Canadian Pacific Railway

There is also a large Fleet of Coastwise vessels trading regularly to the Port of Bristol.



SIDINGS & CONNECTIONS MIDLAND & G W. RAILWAYS, AVONMOUTH DOCK.





BRISTOL—CUMBERLAND BASIN ENTRANCE—FROM SOMERSETSHIRE SIDE.

